



**REGIONAL SPECIALISED METEOROLOGICAL CENTRE-TROPICAL CYCLONES, NEW DELHI
SPECIAL TROPICAL WEATHER OUTLOOK**

DEMS-RSMC TROPICAL CYCLONES NEW DELHI DATED 28.05.2024

SPECIAL TROPICAL WEATHER OUTLOOK FOR NORTH INDIAN OCEAN (THE BAY OF BENGAL AND THE ARABIAN SEA) VALID FOR NEXT 168 HOURS ISSUED AT 0300 UTC OF 28.05.2024 BASED ON 0000 UTC OF 28.05.2024.

BAY OF BENGAL:

SUB: DEEP DEPRESSION (REMNANT OF CYCLONIC STORM “REMAL”) WEAKENED INTO A DEPRESSION OVER EAST BANGLADESH

THE DEEP DEPRESSION (REMNANT OF CYCLONIC STORM “REMAL”) OVER BANGLADESH MOVED EAST-NORTHEASTWARDS WITH A SPEED OF 12 KMPH DURING PAST 06 HOURS, WEAKENED INTO A DEPRESSION AND LAY CENTERED AT 0000 UTC OF 28TH MAY, 2024 OVER EAST BANGLADESH, NEAR LATITUDE 24.4 °N AND LONGITUDE 91.1 °E ABOUT 260 KM NORTH-NORTHEAST OF MONGLA (41958, BANGLADESH), 60 KM WEST-SOUTHWEST OF SRIMANGAL (41915, BANGLADESH) AND 100 KM NORTHEAST OF DHAKA (41923, BANGLADESH) AND 170 KM WEST-SOUTHWEST OF SILCHER (42619, INDIA).

THE SYSTEM IS LIKELY TO MOVE EAST-NORTHEASTWARDS, AND WEAKEN FURTHER INTO A WELL MARKED LOW PRESSURE AREA DURING NEXT 12 HOURS.

THE LATEST SATELLITE IMAGERY INDICATES THAT THE VORTEX LIES OVER NORTH-EAST BANGLADESH & NEIGHBOURHOOD CENTERED WITHIN HALF A DEGREE OF 24.4N / 91.1E OVERLAND. CENTER IS NOT WELL DEFINED IN SATELLITE IMAGERY. ASSOCIATED SCATTERED TO BROKEN LOW/MEDIUM CLOUDS WITH EMBEDDED INTENSE TO VERY INTENSE CONVECTION OVER NORTH BAY OF BENGAL, SOUTH EASTERN PARTS OF ASSAM, MANIPUR, MIZORAM, EAST BANGLADESH, (CLOUD TOP TEMPERATURE IS -85 TO -93 DEG CEL) AND MODERATE TO INTENSE CONVECTION OVER EAST GANGETIC WEST BENGAL, NORTH EASTERN STATES OF INDIA (CLOUD TOP TEMPERATURE IS -55 TO -65 DEG CEL). SCATTERED LOW/MED CLOUDS WITH EMBEDDED MODERATE TO INTENSE CONVECTION OVER CENTRAL BAY OF BENGAL NORTH ANDAMAN SEA & GULF OF MARTABAN AND ISOLATED WEAK TO MODERATE CONVECTION OVER SOUTH BAY OF BENGAL.

AS PER LATEST OBSERVATIONS, ESTIMATED CENTRAL PRESSURE IS 989.0 HPA AT 000 UTC OF 28TH MAY. ESTIMATED MAXIMUM SUSTAINED WIND SPEED IS 20 KNOTS GUSTING TO 30 KNOTS. A STATION IN BANGLADESH (41915) REPORTED LOWEST PRESSURE OF 989.7 HPA. PRESSURE OF OUTERMOST CLOSED ISOBAR IS 994 HPA.

ARABIAN SEA:

SCATTERED TO BROKEN LOW TO MEDIUM CLOUDS WITH EMBEDDED INTENSE TO VERY INTENSE CONVECTION OVER WEST CENTRAL & SOUTH ARABIAN SEA, LAKSHADEEP ISLAND AREA, MALDIVES & COMORIN AREA (MINIMUM CTT -85 TO -93 DEG CELSIUS). SCATTERED TO BROKEN LOW TO MEDIUM CLOUDS WITH EMBEDDED INTENSE TO VERY INTENSE CONVECTION OVER AND WEAK TO MODERATE CONVECTION OVER EAST CENTRAL ARABIAN SEA.

*PROBABILITY OF CYCLOGENESIS (FORMATION OF DEPRESSION) DURING NEXT 168 HRS:

24 HOURS	24-48 HOURS	48-72 HOURS	72-96 HOURS	96-120 HOURS	120-144 HOURS	144-168 HOURS
NIL	NIL	NIL	NIL	NIL	NIL	NIL

*NOTE: EVERY 24HR FORECAST IS VALID UPTO 0300 UTC (0830 IST) OF NEXT DAY

WIND WARNING:

(A) BAY OF BENGAL AND ALONG & OFF BANGLADESH AND WEST BENGAL COASTS

- ❖ SQUALLY WIND SPEED REACHING 40-50 KMPH GUSTING TO 60 KMPH VERY LIKELY TO PREVAIL OVER NORTH BAY OF BENGAL TILL 0600 UTC OF 28TH AND IMPROVE THEREAFTER.

(B) NORTHEASTERN STATES

- ❖ SQUALLY WIND SPEED REACHING 40-50 KMPH GUSTING TO 60 KMPH IS LIKELY OVER SOUTH ASSAM AND MEGHALAYA, MIZORAM, TRIPURA AND 35-45 KMPH GUSTING TO 55 KMPH IS LIKELY OVER NAGALAND, MANIPUR AND REMAINING PARTS OF ASSAM TILL 0600 UTC OF 28TH AND THEREAFTER VERY LIKELY TO DECREASE AND BECOMING 35-45 KMPH GUSTING TO 55 KMPH OVER ASSAM, MEGHALAYA, MIZORAM & TRIPURA TILL 1200 UTC OF 28TH MAY.

SEA CONDITION WARNING:

(A) NORTH BAY OF BENGAL, ALONG & OFF BANGLADESH AND WEST BENGAL COASTS

ROUGH SEA CONDITION VERY LIKELY OVER NORTH BAY OF BENGAL, ALONG & OFF BANGLADESH AND WEST BENGAL COASTS TILL 0600 UTC OF 28TH MAY AND IMPROVE THEREAFTER.

REMARKS:

CURRENT ENVIRONMENTAL CONDITIONS INDICATE THAT SYSTEM LEADING TO SLOW WEAKENING OF THE SYSTEM. LOW LEVEL VORTICITY IS ABOUT $0-50 \times 10^{-5} \text{S}^{-1}$ OVER NORTH BAY OF BENGAL & ADJOINING COASTAL BANGLADESH TO THE SOUTH OF SYSTEM CENTRE, WITH VERTICAL EXTENSION UPTO 500 HPA LEVEL. LOW LEVEL CONVERGENCE IS ABOUT $30 \times 10^{-5} \text{S}^{-1}$ TO THE SOUTH OF THE SYSTEM CENTER. UPPER-LEVEL DIVERGENCE IS ABOUT $40 \times 10^{-5} \text{S}^{-1}$ NEAR SYSTEM CENTRE. VERTICAL WIND SHEAR (VWS) IS LOW (05-10 KT) ALONG THE FORECAST TRACK. THE SYSTEM IS LYING NOW MOVING AWAY FROM THE RIDGE AT AROUND 21.5N. THE SYSTEM HAS MOVED NORTHEASTWARDS. AS IT MOVES FURTHER NORTHEASTWARDS, THE MOIST AIR ADVECTION INTO THE CORE WILL DECREASE AND THE SYSTEM WOULD WEAKEN GRADUALLY DURING NEXT 12 HOURS.

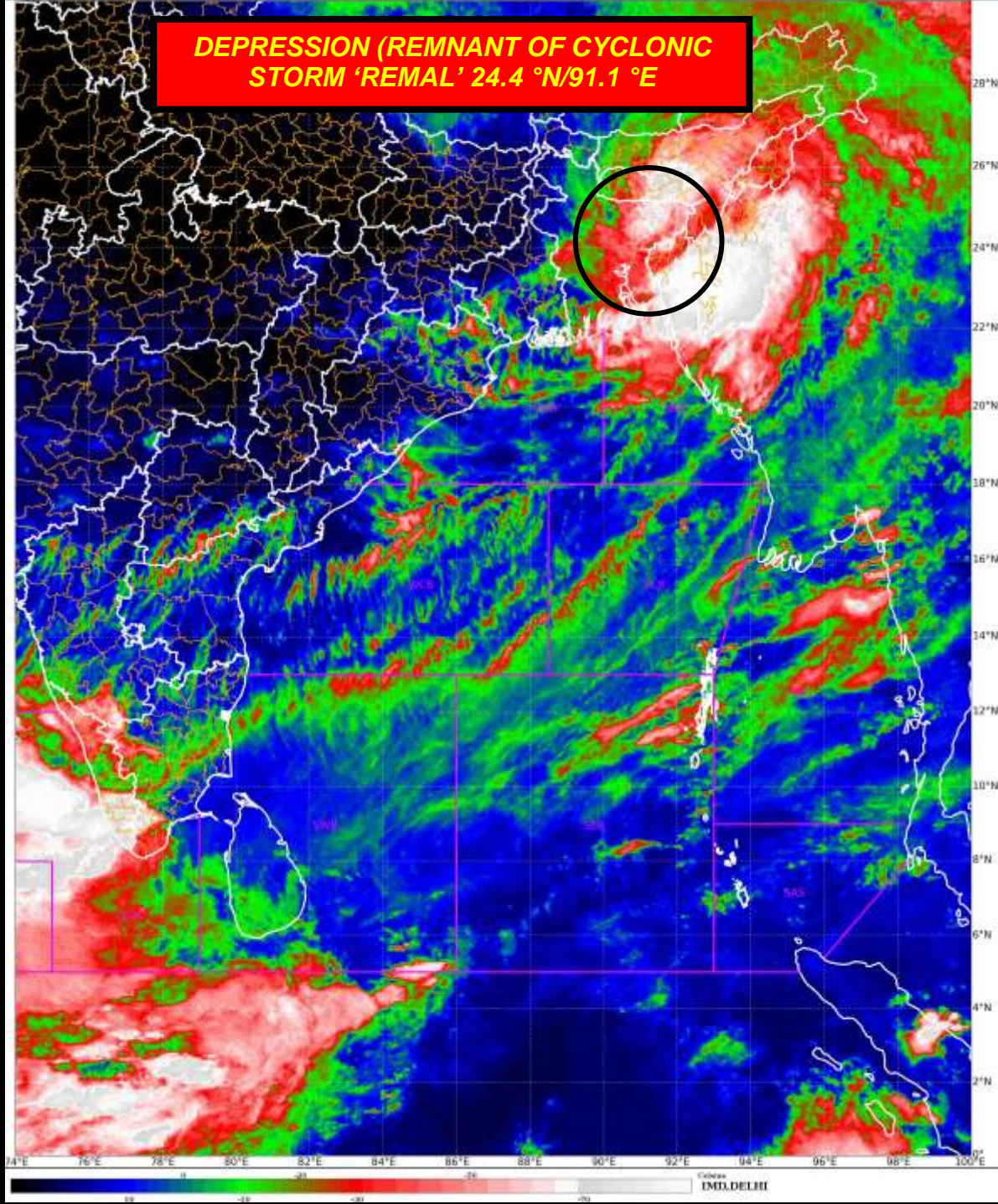
IN VIEW OF ALL THE ABOVE, THE **DEEP DEPRESSION (REMNANT OF CYCLONIC STORM “REMAL”)** OVER BANGLADESH MOVED EAST-NORTHEASTWARDS WITH A SPEED OF 12 KMPH DURING PAST 06 HOURS, WEAKENED INTO A DEPRESSION AND LAY CENTERED AT 0000 UTC OF 27TH MAY, 2024 OVER EAST BANGLADESH, NEAR LATITUDE 24.4 °N AND LONGITUDE 91.1 °E ABOUT 260 KM NORTH-NORTHEAST OF MONGLA (41958, BANGLADESH), 60 KM WEST-SOUTHWEST OF SRIMANGAL (41915, BANGLADESH) AND 100 KM NORTHEAST OF DHAKA (41923, BANGLADESH) AND 170 KM WEST-SOUTHWEST OF SILCHER (42619, INDIA).

THE SYSTEM IS LIKELY TO MOVE EAST-NORTHEASTWARDS, AND WEAKEN FURTHER INTO A WELL MARKED LOW PRESSURE AREA DURING NEXT 12 HOURS.

ARULALAN T
SCIENTIST C
RSMC NEW DELHI



DEPRESSION (REMNANT OF CYCLONIC STORM 'REMAL' 24.4 °N/91.1 °E



Cloud distribution: (a) Isolated: <25%, Scattered:25-50%, Broken: 51-75%, Solid:>75%, Convection Intensity: (a) Weak: Cloud Top Temperature (CTT) >-25°C, (b) Moderate: CTT: - 25°C to -40°C, (c) Intense: CTT: - 41°C to -70°C and (d) Very Intense: : Less than -70°C
PROBABILITY OF CYCLOGENESIS (FORMATION OF DEPRESSION):NIL: 0%, LOW: 1-33%, , MODERATE: 34-66% AND HIGH: 67-100%
This is a guidance Bulletin for WMO/ESCAP Panel Member countries. Visit respective National websites for Country specific Bulletins



FORECAST TRACK ALONGWITH CONE OF UNCERTAINTY IN ASSOCIATION WITH DEPRESSION (REMANANT OF CYCLONIC STORM 'REMAL') OVER EAST BANGLADESH BASED ON 0000 UTC (0530 IST) OF 28TH MAY 2024.



DATE/TIME IN UTC
IST=UTC + 0530

L: LOW PRESSURE AREA

WML: WELL MARKED LOW PRESSURE AREA

D: DEPRESSION (17-27 KT)

DD: DEEP DEPRESSION (28-33 KT)

CS: CYCLONIC STORM (34-47 KT)

SCS: SEVERE CYCLONIC STORM (48-63KT)

VSCS: VERY SEVERE CYCLONIC STORM (64-89 KT)

ESCS: EXTREMELY SEVERE CYCLONIC STORM (90-119 KT)

SuCS: SUPER CYCLONIC STORM \geq 120 KT)

● LESS THAN 34 KT

○ 34-47 KT

○ \geq 48 KT

— OBSERVED TRACK

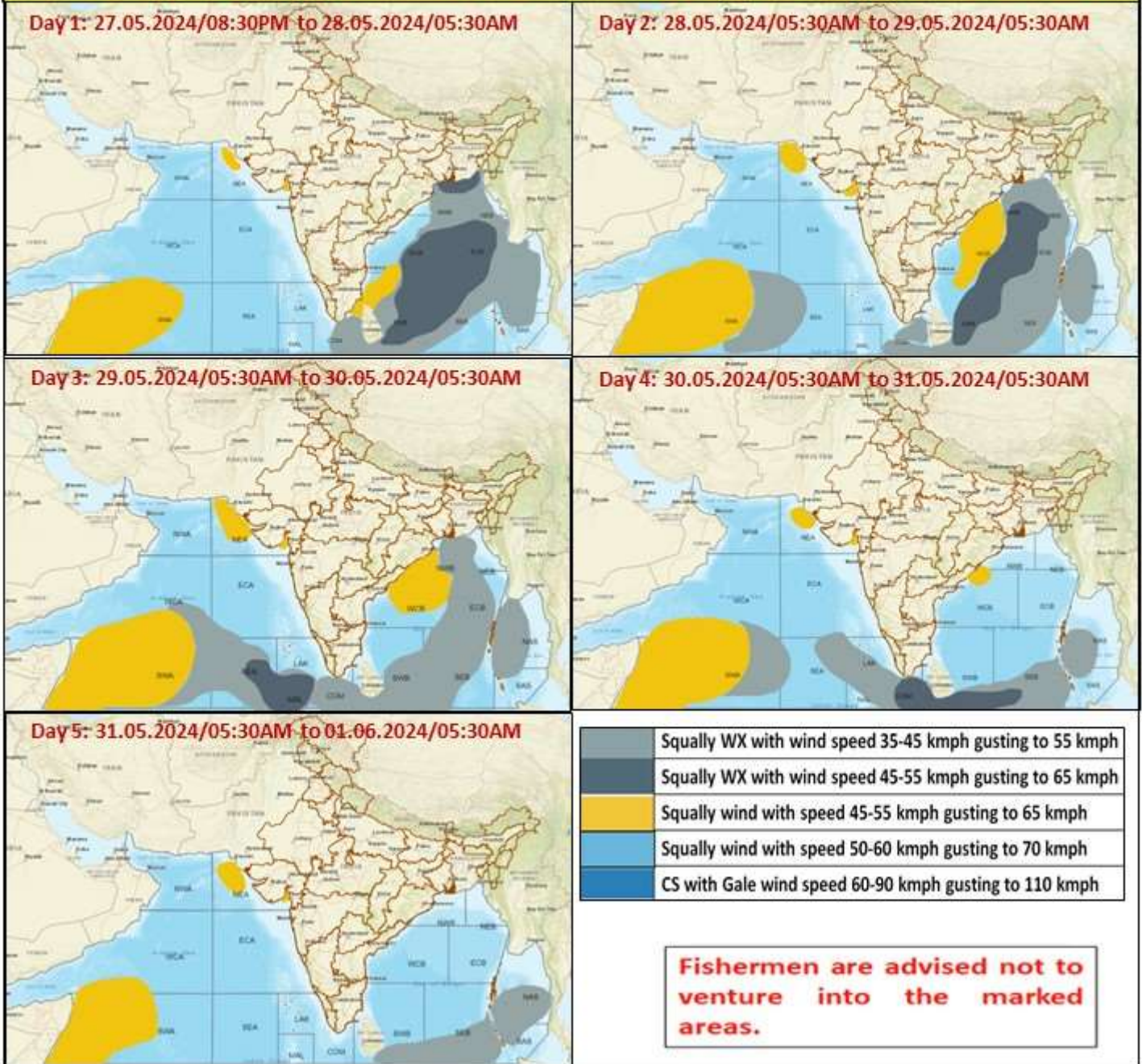
— FORECAST TRACK

▲ CONE OF UNCERTAINTY

Forecast	DISTANCE (KM) AND DIRECTION FROM STATIONS			
Date and Time (UTC)	Silchar	Mongla	SRIMANGAL	Dhaka
28.05.24/0000	170, WSW	260, NNE	60, WSW	100, NE

Cloud distribution: (a) Isolated: <25%, Scattered:25-50%, Broken: 51-75%, Solid:>75%, Convection Intensity: (a) Weak: Cloud Top Temperature (CTT) >-25°C, (b) Moderate: CTT: - 25°C to -40°C, (c) Intense: CTT: - 41°C to -70°C and (d) Very Intense: : Less than -70°C
PROBABILITY OF CYCLOGENESIS (FORMATION OF DEPRESSION):NIL: 0%, LOW: 1-33%, , MODERATE: 34-66% AND HIGH: 67-100%
This is a guidance Bulletin for WMO/ESCAP Panel Member countries. Visit respective National websites for Country specific Bulletins

Fishermen Warning Graphics



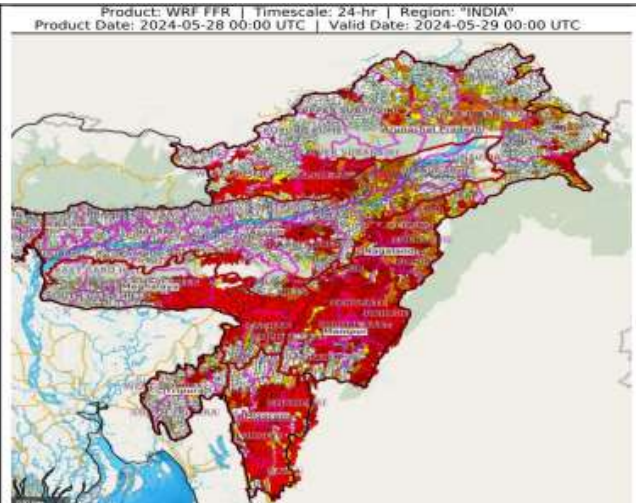
Cloud distribution: (a) Isolated: <25%, Scattered:25-50%, Broken: 51-75%, Solid:>75%, Convection Intensity: (a) Weak: Cloud Top Temperature (CTT) >-25°C, (b) Moderate: CTT: - 25°C to -40°C, (c) Intense: CTT: - 41°C to -70°C and (d) Very Intense: : Less than -70°C
 PROBABILITY OF CYCLOGENESIS (FORMATION OF DEPRESSION):NIL: 0%, LOW: 1-33%, , MODERATE: 34-66% AND HIGH: 67-100%
 This is a guidance Bulletin for WMO/ESCAP Panel Member countries. Visit respective National websites for Country specific Bulletins

Flash Flood Guidance for Northeastern States

24 hours Outlook for the Flash Flood Risk (FFR) till 0530 IST of 29-05-2024 :

Low to Moderate flash flood risk likely over few watersheds & neighbourhoods of Arunachal Pradesh, Assam & Meghalaya and NMMT Met Sub-divisions during next 24 hours.

Surface runoff/ Inundation may occur on low lying areas due to persistent rainfall under the influence of remnant Cyclonic Storm "Remal" in next 24 hours.



Flash Flood Threat	Flash Flood Risk
 High Threat (Take Action)	 High Risk (Take Action)
 Moderate threat (Be Prepared)	 Moderate Risk (Be Prepared)
 Low Threat (Be Updated)	 Low Risk (Be Updated)